

BASS

33 WEST

JOSEPH HENSON

MEDIUM SWING ♩ = 136

mf

5-8

10

16

Amin⁶/₉ D7(#11) C7(#11)

21

Amin⁶/₉ D7(#11) C7(#11) Amin⁶/₉

26

D7(#11) C7(#11) (A) B13(SUS4) Bbmaj7(#11)

(2 FEEL)

32

Gmin⁶/₉ Fmaj7(#5) Eo/D

38

Amin7 Emin7 Fmin7 Bb7 D7(#9)

44

(B) B13(SUS4) Bbmaj7(#11) Gmin⁶/₉

THIS COMPOSITION IS IN THE PUBLIC DOMAIN

2
50 **F**MAJ7(#5) **BASS** **E**o/D **A**min7

56 **E**min7 **F**min7 **Bb**7(b9) **(C)**

61

66

71 **(D)** **B**13(SUS4) **(2 FEEL)**

76

(E) **(4-ISH / 2-ISH)** **B**13(SUS4) **Bb**MAJ7(#11) **G**min6/9

87 **F**MAJ7(#5) **E**o/D **A**min7 **E**min7

93 **F**min7 **Bb**7 **D**7(#9) **B**13(SUS4)

99 **B \flat MAJ7(#11)** **Gmin \flat ₉** **BASS** **FMAJ7(#5)**

105 **E \circ /D** **Amin7** **Emin7** **Fmin7** **B \flat 7(b9)**

111

115

120 **A \flat /C**

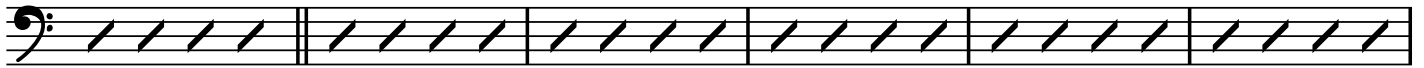
125 **BMAJ7** **B13(SUS4)** **E13(SUS4)**

130 **D7(SUS4)** **C7(#11)** ****F** B13(SUS4)** **B \flat MAJ7(#11)**

136 **Gmin \flat ₉** **FMAJ7(#5)** **E \circ /D**

142 **Amin7** **Emin7** **Fmin7** **B \flat 7** **D7(#9)**

4
148 **B**13(b9SUS4) BASS **Bb**MAJ7(#11) **G**min6/9



154 **F**MAJ7(#5) **E**0/D **A**min7



160 **E**min7 **F**min7 **Bb**7(b9) **(G)** C#min6/9



BASS

195 C7(#11) (I)

Musical staff for measure 195, bass clef, key signature of one sharp (F#). The staff contains a sequence of eighth notes: G2, A2, B2, C3, D3, E3, F#3, G3, A3, B3, C4, D4, E4, F#4, G4, A4, B4, C5. There is a double bar line after the eighth note G3. A circled 'I' is above the staff.

201

Musical staff for measure 201, bass clef, key signature of one sharp (F#). The staff contains a sequence of eighth notes: G3, A3, B3, C4, D4, E4, F#4, G4, A4, B4, C5, D5, E5, F#5, G5, A5, B5, C6.

207

Musical staff for measure 207, bass clef, key signature of one sharp (F#). The staff contains a sequence of eighth notes: G3, A3, B3, C4, D4, E4, F#4, G4, A4, B4, C5, D5, E5, F#5, G5, A5, B5, C6.

213 (J)

Musical staff for measure 213, bass clef, key signature of one sharp (F#). The staff contains a sequence of eighth notes: G3, A3, B3, C4, D4, E4, F#4, G4, A4, B4, C5, D5, E5, F#5, G5, A5, B5, C6. There is a double bar line after the eighth note G5. A circled 'J' is above the staff.

218

Musical staff for measure 218, bass clef, key signature of one sharp (F#). The staff contains a sequence of eighth notes: G3, A3, B3, C4, D4, E4, F#4, G4, A4, B4, C5, D5, E5, F#5, G5, A5, B5, C6. There are accents (^) above the notes G3, B3, and G5.

223

Musical staff for measure 223, bass clef, key signature of one sharp (F#). The staff contains a sequence of eighth notes: G3, A3, B3, C4, D4, E4, F#4, G4, A4, B4, C5, D5, E5, F#5, G5, A5, B5, C6. There is an accent (^) above the note G5.

227

Musical staff for measure 227, bass clef, key signature of one sharp (F#). The staff contains a sequence of eighth notes: G3, A3, B3, C4, D4, E4, F#4, G4, A4, B4, C5, D5, E5, F#5, G5, A5, B5, C6. There are accents (^) above the notes G3, B3, and G5.

232 (R) B13(SUS4)

Musical staff for measure 232, bass clef, key signature of one sharp (F#). The staff contains a sequence of eighth notes: G3, A3, B3, C4, D4, E4, F#4, G4, A4, B4, C5, D5, E5, F#5, G5, A5, B5, C6. There are five slashes (/) in the staff. A circled 'R' is above the staff.

236 (RIT.)

Musical staff for measure 236, bass clef, key signature of one sharp (F#). The staff contains a sequence of eighth notes: G3, A3, B3, C4, D4, E4, F#4, G4, A4, B4, C5, D5, E5, F#5, G5, A5, B5, C6. There is a circled 'RIT.' above the staff.