

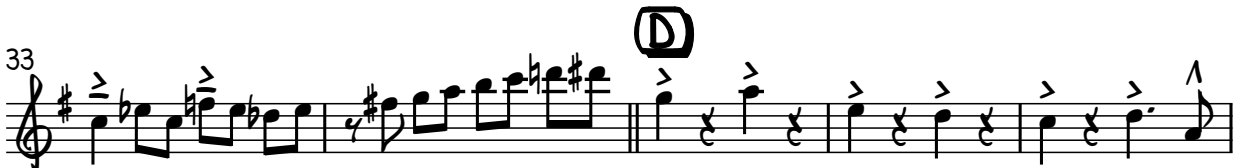
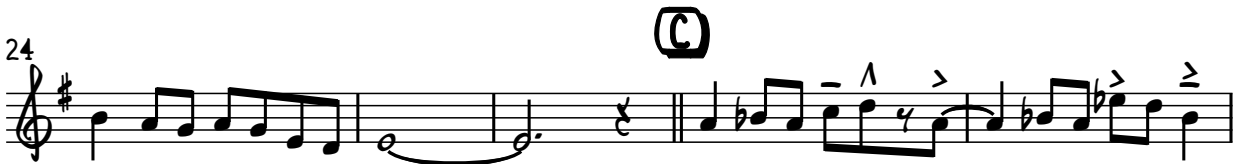
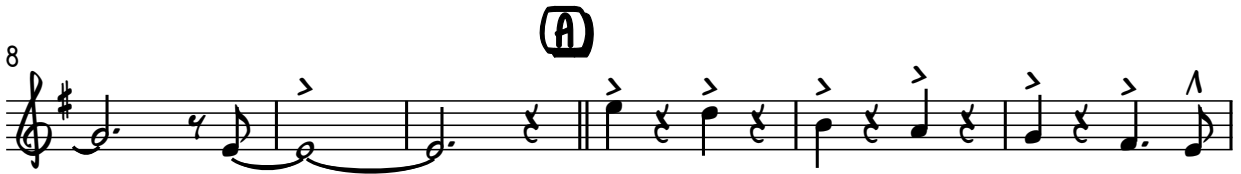
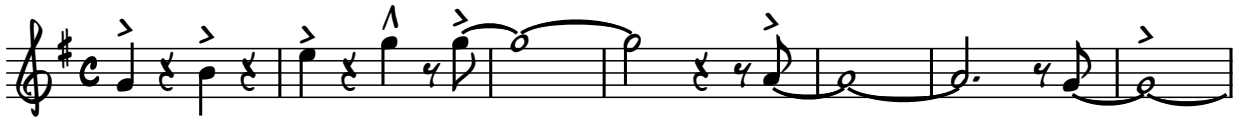
TENOR 1

COMP/ARRANGED - FRAEDRICH

A MINOR MATTER

(2012)

♩=260 SWING



VS.

44

(E) *S* SOLOS - BACKGROUNDS LAST X

Em7 G13 Cmaj7 F13 Bbmaj7 B7ALT. Em7 C13 F#o7 B7ALT.

(OPTIONAL SOLO)

57 Em7 Em6 F#o7 B7ALT. **(F)** Em7 G13 Cmaj7 F13 Bbmaj7 B7ALT.

62 Em7 C13 F#o7 B7ALT. Em7

(G)

Gm11 Bbm11

73 B7ALT. **(H)** Em7 G13 Cmaj7 F13 Bbmaj7 B7ALT. Em7

79 C13 F#o7 B7ALT. 1.2. Em7 3.

85 -

89 OPT. D.S. FOR MORE SOLOS

(I) SAX SOLO

97

(J)

105

(K)

113

(L)

(M) TRUMPET SOLO- BACKGROUNDS LAST X

122

(N)

132



139

144



155-156

157

162

165-166



BIG BUILD TO BAR 207



mp 167-174 *mf* 175-180



f

187



f

195

Musical staff for measure 195, featuring a treble clef, a key signature of one sharp (F#), and a 4/4 time signature. The staff contains a sequence of notes with various articulations including accents (^) and slurs.

(U)

Musical staff for measure 200, featuring a treble clef, a key signature of one sharp (F#), and a 4/4 time signature. The staff contains a sequence of notes with various articulations including accents (^) and slurs. The dynamic marking *ff* is present below the staff.

203

Musical staff for measure 203, featuring a treble clef, a key signature of one sharp (F#), and a 4/4 time signature. The staff contains a sequence of notes with various articulations including accents (^) and slurs.

(V)

Musical staff for measure 208-209, featuring a treble clef, a key signature of one sharp (F#), and a 4/4 time signature. The staff contains a sequence of notes with various articulations including accents (^) and slurs. The dynamic marking *fff* is present below the staff. The measure numbers 208-209 are indicated below the staff.

(W)

Musical staff for measure 216-217, featuring a treble clef, a key signature of one sharp (F#), and a 4/4 time signature. The staff contains a sequence of notes with various articulations including accents (^) and slurs. The measure numbers 216-217 are indicated below the staff.

(X)

SHOOT!

222

Musical staff for measure 222, featuring a treble clef, a key signature of one sharp (F#), and a 4/4 time signature. The staff contains a sequence of notes with various articulations including accents (^) and slurs. The dynamic marking *ff* is present below the staff. A box containing the word "SHOOT!" is positioned above the staff.

227

Musical staff for measure 227, featuring a treble clef, a key signature of one sharp (F#), and a 4/4 time signature. The staff contains a sequence of notes with various articulations including accents (^) and slurs.

(1)



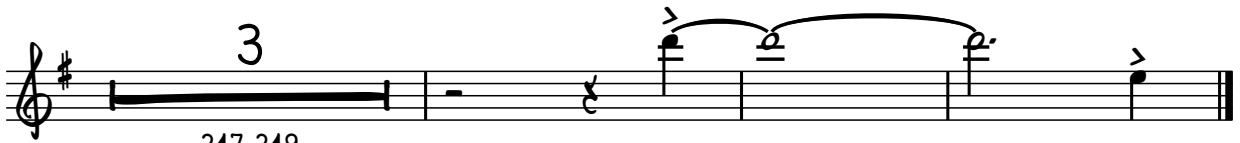
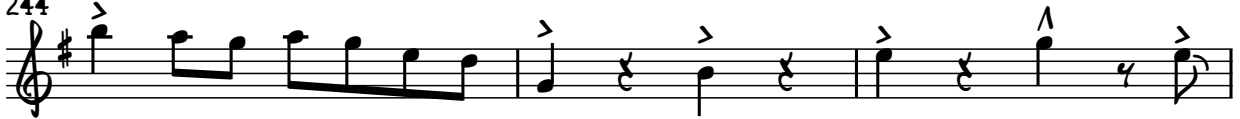
235



(2)



244



247-249