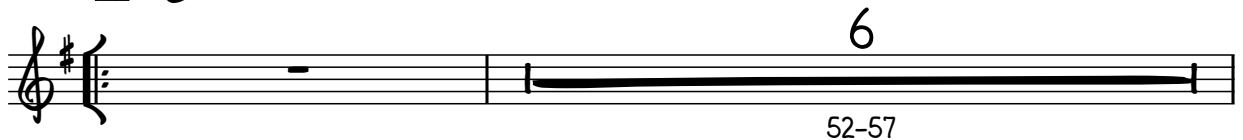
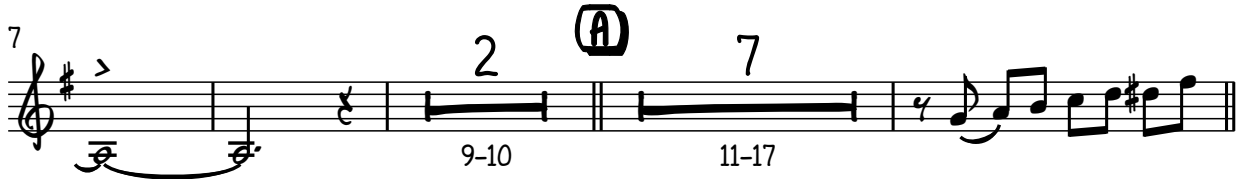
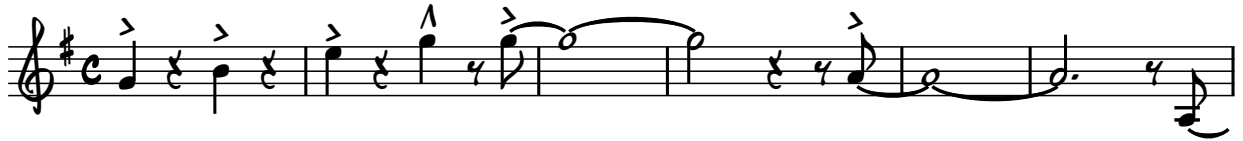


A MINOR MATTER

(2012)

♩=260 SWING



(F)

58

61

(G)

(H)

7

67-73

77

12. 2 3.

81-82

84

(I)

SAX SOLO

90

OPT. D.S. FOR MORE SOLOS

8

93-100

(J)

(K)

8

101-108

(L)

114

119

(M) (N) TRUMPET SOLO- BACKGROUNDS LAST X

138

144

(P)

157

162

(Q) (R)

BIG BUILD TO BAR 207

(S)

181

Musical staff 181-185 in G major. It begins with a whole rest, followed by eighth notes G4, A4, B4, and C5. A dynamic marking of *f* is present. The staff concludes with a double bar line.

186

Musical staff 186-190 in G major. It starts with a quarter rest, followed by quarter notes G4, A4, B4, and C5. The staff ends with a double bar line.

(T)

Musical staff 191-194 in G major. It begins with a quarter rest, followed by quarter notes G4, A4, B4, and C5. A dynamic marking of *f* is present. The staff ends with a double bar line.

195

Musical staff 195-198 in G major. It starts with a quarter rest, followed by quarter notes G4, A4, B4, and C5. The staff ends with a double bar line.

(U)

Musical staff 199-202 in G major. It begins with a quarter rest, followed by quarter notes G4, A4, B4, and C5. A dynamic marking of *ff* is present. The staff ends with a double bar line.

203

Musical staff 203-206 in G major. It starts with a quarter rest, followed by quarter notes G4, A4, B4, and C5. The staff ends with a double bar line.

(V)

Musical staff 207-209 in G major. It features a triplet of eighth notes G4, A4, B4, followed by a quarter rest and a quarter note C5. A dynamic marking of *fff* is present. The staff ends with a double bar line.

(W) *fff*

Musical staff 210-217 in G major. It features a triplet of eighth notes G4, A4, B4, followed by a quarter rest and a quarter note C5. A dynamic marking of *fff* is present. The staff ends with a double bar line.

222

(X) SHOUT!

(Y)

4

227-230

235

(Z)

2

242-243

245

3

247-249