

DRUMS

EVANGELON

(GOOD NEWS)

JOSEPH HENSON

STRAIGHT EIGHTHS ♩ = 195

(A)

14

(B)

30

(C)

(8)

46

(16)

(D)

62

THIS COMPOSITION IS IN THE PUBLIC DOMAIN

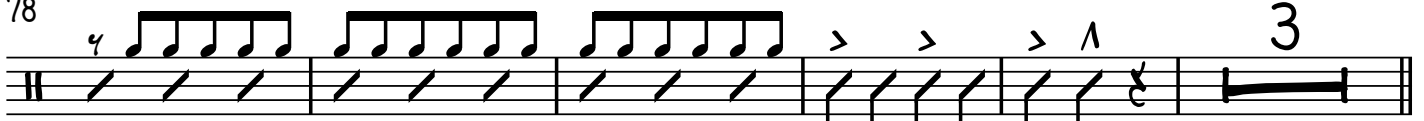
DRUMS

70

(8)

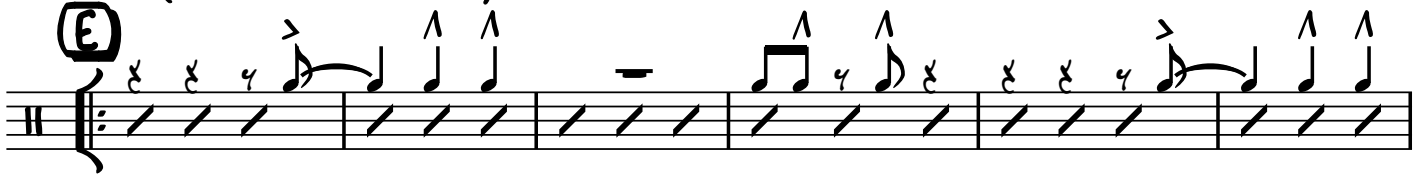


78

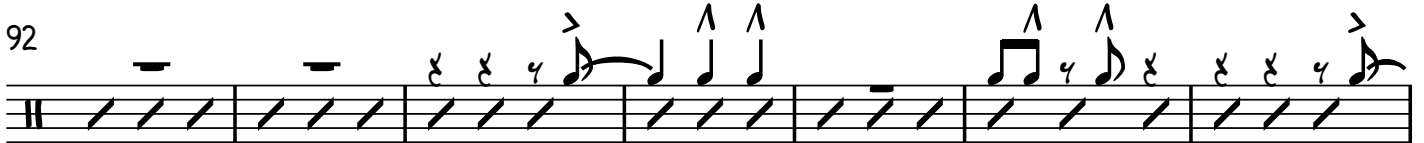


(2ND & 4TH TIMES ONLY)

83-85



92



99



105



111



118



126

(8)



DRUMS

F

142

G

158

H

173

180

187

194

DRUMS

202

Musical notation for drum part 202, featuring a series of eighth notes with accents and slurs.

211

Musical notation for drum part 211, including a circled 'R' marking and various note values.

219

Musical notation for drum part 219, showing eighth notes with accents and slurs.

225

Musical notation for drum part 225, featuring eighth notes with accents and slurs.

230 (SOLO)

(8)

Musical notation for drum part 230 (SOLO), consisting of a series of diagonal lines representing a solo section.

238

(16)

Musical notation for drum part 238, consisting of a series of diagonal lines representing a solo section.

(L)

(8)

Musical notation for drum part (L), consisting of a series of diagonal lines representing a solo section.

254

(16)

Musical notation for drum part 254, featuring eighth notes with accents and slurs.

262

Musical notation for drum part 262, featuring eighth notes with accents and slurs.

DRUMS

270

Musical notation for drum set 270. It consists of a single staff with a drum set symbol (H) on the left. The notation includes a series of eighth notes with slurs and accents, and a final measure with a triplet of eighth notes.

278 (8)

Musical notation for drum set 278. It consists of a single staff with a drum set symbol (H) on the left. The notation is a continuous eighth-note pattern with slurs and accents, repeated for 8 measures.

286

Musical notation for drum set 286. It consists of a single staff with a drum set symbol (H) on the left. The notation includes a series of eighth notes with slurs and accents, and a final measure with a triplet of eighth notes.

290 (SOLO FILL)

Musical notation for drum set 290. It consists of a single staff with a drum set symbol (H) on the left. The notation includes a series of eighth notes with slurs and accents, and a final measure with a triplet of eighth notes. The text "(SOLO FILL)" is written above the staff.

296

Musical notation for drum set 296. It consists of a single staff with a drum set symbol (H) on the left. The notation includes a series of eighth notes with slurs and accents, and a final measure with a triplet of eighth notes. The text "(SOLO FILL)" is written above the staff.